

AVANI

Atrium Bangkok

Avani Atrium Bangkok Hotel



A great city location and seamless guest stay

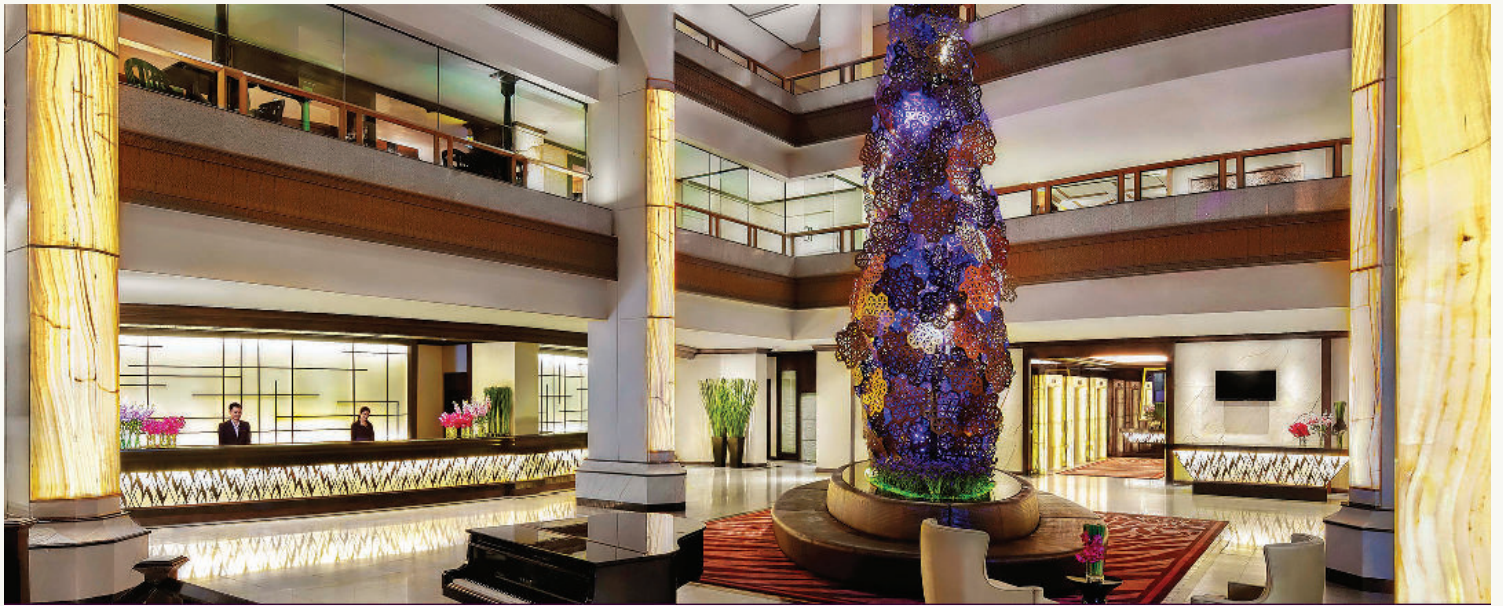
Wake up in the City of Angels. Watch the sunrise over skyscrapers. Kick back after a day of exploring and get the best of Thailand's buzzing capital with modern warmth and lifestyle essentials at Avani Atrium Bangkok. It's never been easier to mix travel, business and leisure. Take care of business, sleep in style each night and have total connectivity to Bangkok's vibrant heart.

Be spoilt for choice with 542 comfortably modern rooms and 26 suites spread over 8 different room types. There is even more reason to book an Executive room or suite with a dedicated AvaniClub Executive Lounge floor that offers stunning views and executive extras. All rooms and suites offer a host of contemporary features and essential comforts, including full WiFi connectivity.

A great location

Avani Atrium Bangkok sits in the heart of Bangkok on New Petchaburi Road. Ideally located with some of the city's key business buildings, shopping and IT malls, and world class hospitals, right in our neighborhood. Easily venture around town with subway connections and public transport options at your door stop, while either of Bangkok's two airports are a quick trip away with nearby express access.

Avani Premier Room	30 sqm	261 rooms
Avani Skyline Room	30 sqm	46 rooms
Avani Corner Room	30 sqm	32 rooms
Avani Deluxe Room	30 sqm	174 rooms
Avani Executive Room	30 sqm	29 rooms
Avani Corner Suite	40 sqm	16 rooms
Avani Executive Suite	84 sqm	6 rooms
Avani Grand Executive Suite	129 sqm	4 rooms



City heart beats

Raise your pulse in the heart of Bangkok. With state-of-the-art equipment and plenty of space, enjoy your workout, your way. Stretch out in yoga class, work up a sweat with aerobics or plunge into the pool and take in the view from the AvaniClub Executive Lounge. Feeling adventurous? Pick from a range of exciting excursions to see the local highlights, Avani offers all the options you need.

- Outdoor pool
- Steam room
- Massage room
- AvaniFIT
- Yoga
- Sauna

Fresh, honest eats

We've got snacks, meals, buffets and drinks for every taste. Dig into international delights. Sample Thai specialties and Japanese sizzlers. Grab a quick bite at The Pantry. The hardest part is choosing. Dining in Bangkok has never been this satisfying.

All Day Dining: 6:00 am - 12:00 midnight
PUBLIC all-day dining restaurant - A contemporary restaurant serving International Buffets and A La Carte treats.








Grab & Go: 6:00 am - 12:00 midnight
THE PANTRY - A delightful designer deli for casual meetings and quick snacks on the go.

Pool Bar: 10:00 am - 10:00 pm
Features a full bar perfect for sundowners and drinks by the pool with light bites.

Benihana The Japanese Steakhouse:
Open daily from 12:00 noon - 10:00 pm
Weekend Brunch every Saturday and Sunday from 12:00 noon - 3:00 pm
Iconic Japanese Teppanyaki Steakhouse.

The Kiosk: 7:00 am - 11:00 pm
The upscale retail shop providing necessities, local product and Thailand's souvenirs.



Meeting Rooms	Area		Dimensions (WxLxH)		Seating Options						
	M ²	F ²	M.	Ft.	Theatre	Class room	U-shape	Boardroom	Banquet	Cocktail	H-square
											
Busarakam Ballroom	304	3272	13.5X22.5X7	43.7X72.10X23	340	180	75	85	200	350	85
Section 1	108	1163	13.5X8X7	43.77X25.94X23	120	54	30	30	50	100	30
Section 2	108	1163	13.5X8X7	43.77X25.94X23	120	54	30	30	50	100	30
Section 3	88	947	13.5X6.5X7	43.77X21.08X23	100	54	30	30	50	100	30
Pailin	205	2207	10X20.5X2.5	32.43X65.01X8.2	170	80	60	45	120	150	65
Section 1	125	1345	10X12.5X2.5	32.43X40.53X8.2	90	60	33	30	70	100	33
Section 2	80	861	10X8X2.5	32.48X25.94X8.2	70	40	25	25	30	30	25
Tubtim	64.6	689	9.5X6.8X2.5	30.8X22.05X8.2	70	30	25	25	35	40	25
Morakot	24.6	258	6X4.1X2.5	19.46X13.29X8.2	0	0	0	10	0	0	0
Peitai	58.05	624	6.75X8.6X2.5	20.01X27.89X8.2	40	18	18	18	30	30	18



Meetings

Take care of business, launch a new product or hold an intimate meeting in any one of the eight flexible event and meeting spaces, catering for up to 350 people. You get the ease of fuss-free planning and execution in true Avani style every time. The prime location in the heart of the city gives you easy access to the business district and makes it simple to balance work and fun.

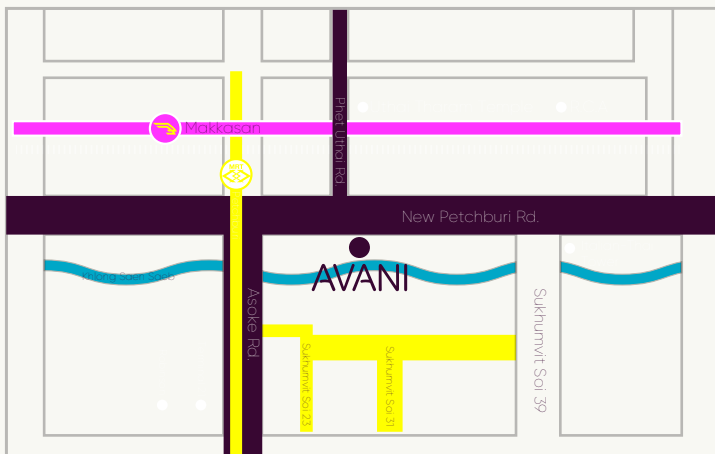


- The meeting packages are based on a minimum of 10 persons
- Meeting packages can be customized accordingly
- Prices are in Thai Baht, subject to 10% service charge and applicable government tax

Easy travel

Perfectly positioned for city adventures, there are plenty of ways to come and go from the hotel, with complimentary shuttle van from hotel to MRT station and nearby attractions.

- 40-minute drive to Suvarnabhumi and Don Mueang airports
- 5-minute walk to Prasanmit boat pier
- 7-minute walk to Phetchaburi subway station
- 10-minute walk to Makkasan Airport Rail Link station



Avani Atrium Bangkok
1880 Petchburi Road, Bangkok,
Huay Kwang, Bangkok 10310 Thailand

T: +66 2 718 2000-1
E: atrium@avanihotels.com

AVANIHOTELS.COM